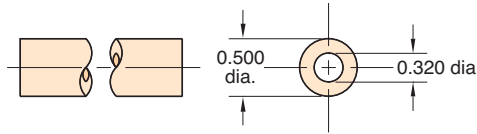


## 1/2" O.D. 95A Polyurethane Tubing

Flexible, durable ether based tubing



**Part No.**

URT1-1610-CLT-□

**Working Range:** 0 to 105 psig at 100°F Maximum 120°F

**Static Burst Pressure:** Over 420 psig at 75°F

**Color:** Clear

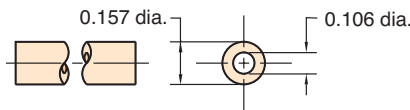
**Lengths Available:** 50' and 250'

**Bend Radius:** 1 1/8"

**Note:** Designed for use with push-in fittings.

## 5/32" O.D. 50D Polyethylene Tubing

Linear low density tubing



**Part No.**

PET1-0503-□-□

**Note:**

Specify color on order, and use full product number (including code letters for color) as shown in Price List. If no color is specified, natural will be furnished.

**Working Range:** 0 to 105 psig at 100°F Maximum 120°F

**Static Burst Pressure:** Over 540 psig at 75°F

**Colors:** Solid: Black or Natural

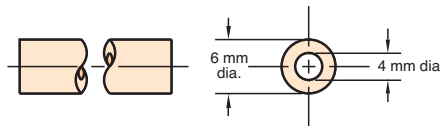
**Lengths Available:** 50' and 500'

**Bend Radius:** 1/2"

**Note:** Designed for use with push-in fittings.

## 6 mm O.D. 50D Polyethylene Tubing

Linear low density tubing



**Part No.**

PET1-0604M-□-□

**Note:**

Specify color on order, and use full product number (including code letters for color) as shown in Price List. If no color is specified, natural will be furnished.

**Working Range:** 0 to 105 psig at 100°F Maximum 120°F

**Static Burst Pressure:** Approximately 560 psig at 75°F

**Colors:** Solid: Black or Natural

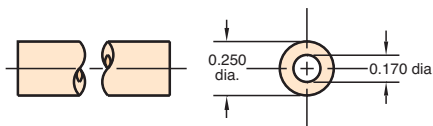
**Lengths Available:** 50' and 500'

**Bend Radius:** 1 1/4"

**Note:** Designed for use with push-in fittings.

## 1/4" O.D. 50D Polyethylene Tubing

Linear low density tubing



**Part No.**

PET1-0805-□-□

**Note:**

Specify color on order, and use full product number (including code letters for color) as shown in Price List. If no color is specified, natural will be furnished.

**Working Range:** 0 to 105 psig at 100°F Maximum 120°F

**Static Burst Pressure:** Approximately 480 psig at 75°F

**Colors:** Solid: Black or Natural

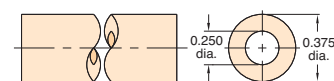
**Lengths Available:** 50' and 500'

**Bend Radius:** 1 1/4"

**Note:** Designed for use with push-in fittings.

## 3/8" O.D. 50D Polyethylene Tubing

Linear low density tubing



**Part No.**

PET1-1208-□-□

**Note:**

Specify color on order, and use full product number (including code letters for color) as shown in Price List. If no color is specified, natural will be furnished.

**Working Range:** 0 to 105 psig at 100°F Maximum 120°F

**Static Burst Pressure:** Approximately 600 psig at 75°F

**Colors:** Solid: Black or Natural

**Lengths Available:** 50' and 500'

**Bend Radius:** 2"

**Note:** Designed for use with push-in fittings.